

Innovative learning tools for skills training



# Trade Skills

**FREE**  
Welding Career  
Exploration  
Activity Inside!



► Career Exploration



► Welding  
► Manufacturing



► Electrical Wiring



► STEM  
► Ag Mechanics



► Measurement Math  
► Soft Skills

**2024**

Program Catalog

**Realityworks®**  
Live it. Learn it.™

Visit [www.realityworks.com/product-category/trade-skills](http://www.realityworks.com/product-category/trade-skills)  
to view product and program details.

Scan me →



# What's inside?

|   |       |
|---|-------|
| Career exploration success story.....   | 1     |
| Program packages .....                  | 2-3   |
| Virtual reality welding simulator ..... | 4     |
| Live welding guidance system .....      | 5     |
| Welding quality inspection tools .....  | 6     |
| Measurement math tools .....            | 7     |
| Electrical wiring learning aids .....   | 7     |
| STEM tools .....                        | 8-9   |
| Soft skills programs .....              | 10-11 |
| Career exploration.....                 | 12    |
| Awards .....                            | 12    |
| FREE classroom resources .....          | 13    |
| Product wish list .....                 | 13    |
| How to order, product support .....     | 13    |

# What's NEW?

|   |                  |
|---|------------------|
| RC Tractor Pull Challenge (5-pack)<br>with Pulling Sled ..... | 9                |
| Contemporary Entrepreneurship<br>Online Course .....          | 10               |
| Contemporary Entrepreneurship<br>(paper-based) .....          | 11               |
| Career Exploration Package .....                              | 12               |
| <b>FREE student activity.....</b>                             | <b>LAST PAGE</b> |

*What are career  
exploration  
camp attendees  
saying?*



# Get innovative with Realityworks

Realityworks is your one-stop shop for CTE programs. Whether you're looking to refresh an agriculture program, start a new health science program, or focus on a variety of trade skills, you'll find hands-on learning aids and comprehensive curricula for engaging today's students in skill development and career exploration.

Our products and programs are ideal for:

- Mitigating learning loss
- Improving student engagement and motivation
- Incorporating student-focused technology
- Expanding after-school and summer programs
- Meeting local industry needs

# Reimagine and refresh your programs today!

*"You can use guideWELD VR to learn your skills to see if you can actually feel like you can succeed in [welding] as a career... You can see if you have a passion and interest in it."*

**Celia McDowell**  
Camp Welding, Wiring, and  
Electrical Trades  
Camp attendee  
Guilford County High School, NC





# CAREER EXPLORATION SUCCESS STORY

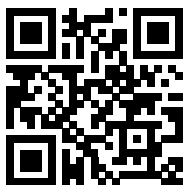
*Guilford County Schools, North Carolina*

Guilford County Schools in North Carolina acquired a variety of Realityworks learning aids for a series of Career Accelerator Summer Programs through federal Elementary and Secondary School Emergency Relief (ESSER) funds. One program component is Camp Welding, Wiring, and Electrical Trades (WWE), which introduces students to in-demand trades careers through lifelike, hands-on learning experiences.



***"The hands-on skills that are provided with these [learning aids] fit perfectly, and it really provides a very rich experience for our students. Realityworks has been a great partner for Guilford County CTE department for a number of years. The products that are provided and are available match very well with our programs."***

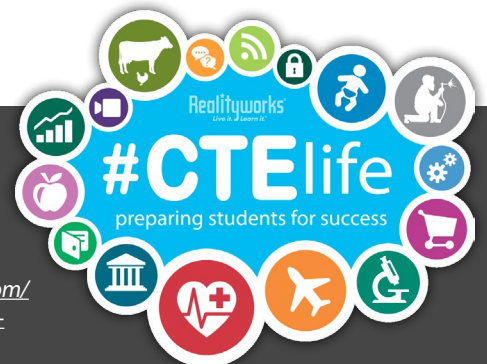
***Vernon Mc Ham - CTE Operations Director, Guilford County Schools, NC***



***See Guilford County School's program in action  
and learn more about their innovative tools!***



Read the full program story here: [www.realityworks.com/stories/using-hands-on-tools-to-explore-in-demand-careers-how-a-nc-county-engages-students-in-cte/](https://www.realityworks.net/stories/using-hands-on-tools-to-explore-in-demand-careers-how-a-nc-county-engages-students-in-cte/)



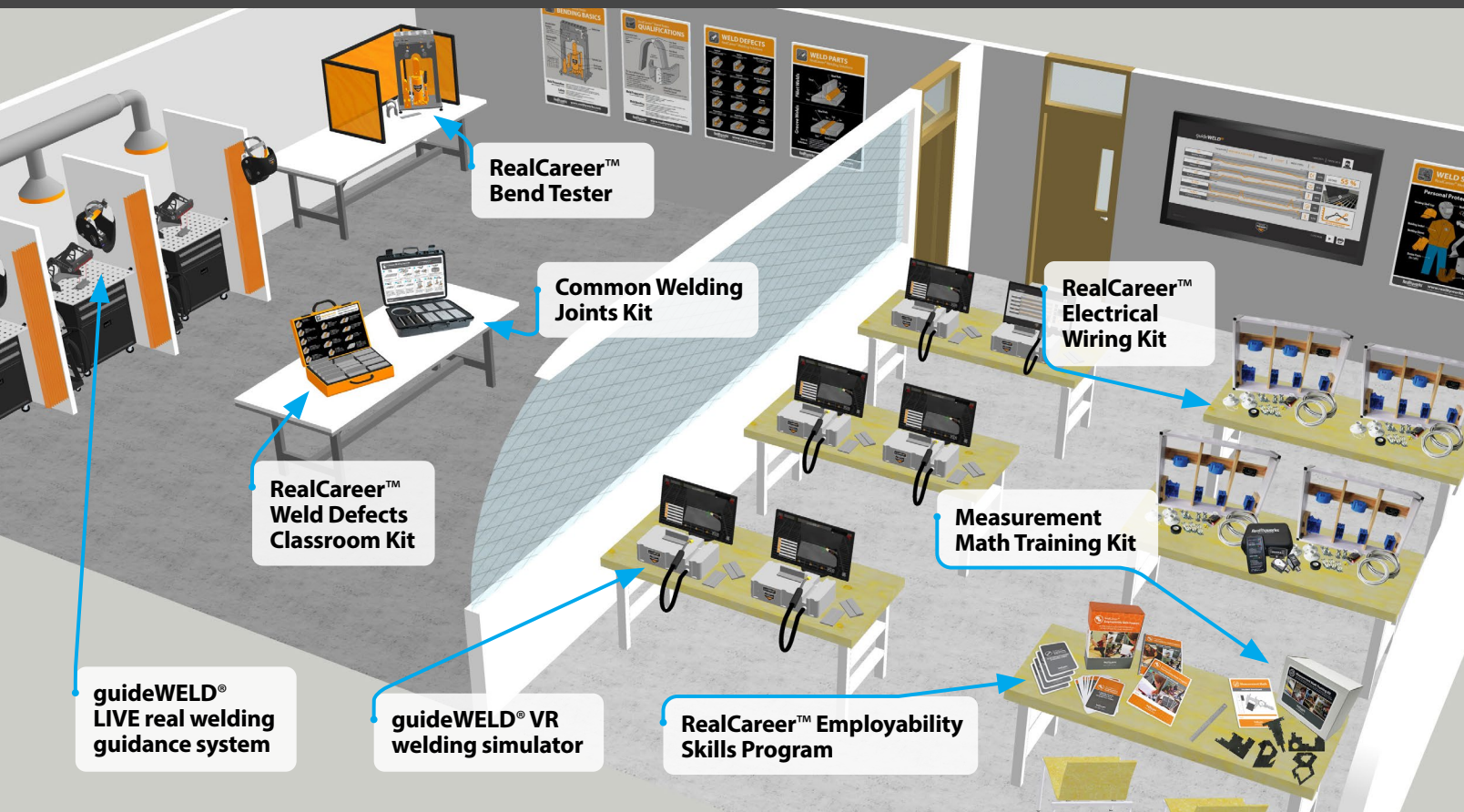




# Trade Skills Pathway Packages

Real-world training tools and comprehensive curricula to support programs focused on high-demand skilled trades.

Visit [www.realityworks.com/product-category/trade-skills/tradeskills-pathway-packages](http://www.realityworks.com/product-category/trade-skills/tradeskills-pathway-packages) to learn more or create a customized package to fit your program needs.



## Basic Trade Skills Package\*

**\$12,999 - 50510346**

**55 hours of course content,  
10 hands-on resources:**

guideWELD VR welding simulator (MIG and Stick guns), Measurement Math Training Kit, RealCareer Electrical Wiring Kit, 4 additional Electrical Wiring Kit Wall Panels, Common Welding Joints Kit, RealCareer Weld Defects Classroom Kit, Welding Career Scenario Cards, Construction Career Scenario Cards, Manufacturing Career Scenario Cards, Electrician Career Scenario Cards





## Maintenance and Construction Package\*

**\$5,499** - 57010901

**30 hours of course content,  
11 hands-on resources:**

2 RealCareer Electrical Wiring Kits,  
8 additional Electrical Wiring  
Kit Wall Panels, RealCareer  
Employability Skills Program



## RealCareer Intro Welding Package\*

**\$18,499** - 55510500

**50 hours of course content,  
3 hands-on resources:**

guideWELD VR welding  
simulator (MIG and Stick guns),  
guideWELD LIVE real welding  
guidance system, RealCareer  
Weld Defects Kit, Group Webinar  
Training



## Power, Structure, and Technical Systems Package\*

**\$41,999** - 50510102

**80 hours of course content,  
18 hands-on resources:**

3 guideWELD VR welding  
simulators (MIG and Stick guns),  
guideWELD LIVE real welding  
guidance system, RealCareer  
Weld Defects Kit, Bend Tester,  
2 RealCareer Electrical Wiring  
Kits, 8 additional Electrical  
Wiring Kit Wall Panels,  
RealCareer Employability Skills  
Program, 10 sets of Welding  
Career Scenario Cards



\*Packages include hands-on resources, curricula, presentation slides, activities, and assessments.

## guideWELD® VR welding simulator \$6,649 - \$8,799

**1 welding process (Stick or MIG)** \$6,649 – 56010101

**Both welding process** \$8,799 – 56010111

Enable users to refine basic welding skills, learn proper welding techniques, and explore welding career paths while saving on costly consumables.

### Features:

- Provides immediate feedback on work angle, travel angle, speed, nozzle-to-plate distance, and straightness
- Offers recorded weld assessments
- MIG and/or Stick welding processes available
- Includes 27 default Welding Procedure Specifications (WPS's) and an option for custom WPS creation
- 3 difficulty levels: Novice, Intermediate, and Advanced
- Easy installation on Windows and MAC operating systems
- No licensing fees or requirements

### Includes:

- 1 guideWELD VR workstation with choice of 1 interchangeable MIG or Stick welding process
- 3 welding joints: Tee, lap, and butt
- 1 pair of welding gloves
- Quick start guide
- Standards-based, downloadable curriculum
- 1-year limited warranty

### Hardware and software specifications:

[www.realityworks.com/guideweldvr-systemrequirements](http://www.realityworks.com/guideweldvr-systemrequirements)

**NOTICE:** Monitor and computer not included.  
Shown: Stick welding simulation process.



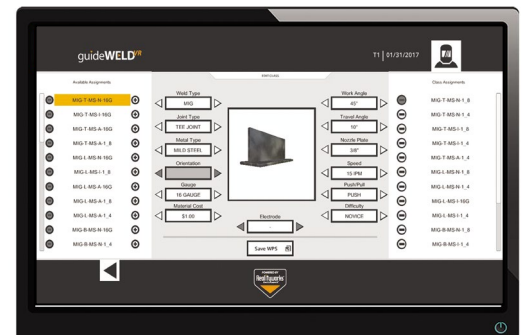
### guideWELD® VR

#### Curriculum lesson topics:

1. Welding Career Opportunities
  2. Types of Welding
  3. Welding Safety – PPE
  4. Welding Equipment
  5. Weld Defects
- Teaching hours: 30
  - Includes: Presentation slides and student activities
  - Aligns to: Common Core State Standards and Common Career Technical Core Standards



Shown: Student's weld assessment report screen



Shown: Teacher's weld creation screen





## guideWELD® LIVE real welding guidance system

\$8,799 – 55010901

Transition users from the classroom to the welding booth by providing corrective in-helmet training during live welding on the core techniques needed to weld effectively.

### Features:

- Provides a peripheral-view display inside the welding helmet during live MIG and Stick welding
- Offers real-time feedback on work angle, travel angle, and travel speed during live welding
- Includes 9 default Welding Procedure Specifications (WPS's) and the option for custom WPS creation
- Works with any MIG or Stick welder
- Ideal for transitioning users from virtual to live welding

### Includes:

- 1 auto-darkening welding helmet with in-helmet guides
- 1 speed sensor board with base for MIG and Stick welding
- 1 angle sensor
- 1 Stick calibration fixture
- Quick start guide
- Standards-based, downloadable curriculum
- 1-year limited warranty

### guideWELD® LIVE

- Curriculum lesson topics:
  1. Welding Career Opportunities
  2. Types of Welding
  3. Welding Safety – PPE
  4. Safety Review Assessment, Certification
  5. Basics to Quality Welds
  6. Identifying and Assessing Defects
  7. Weld Testing
  8. Reading a WPS
  9. Weld Testing and WPS Assessment
- Teaching hours: 30
- Includes: Presentation slides, student activities, and assessment tools
- Aligns to: Common Career Technical Core Standards

Live welding in-helmet  
guidance displays

Same corrective  
guidance icons as displayed  
in guideWELD® VR

Stick  
and MIG

This system can be used  
with any welding machine

Work Angle

Speed

Travel Angle

Work angle, travel angle,  
and speed guidance



**NOTICE:** Welding  
gloves not included.

RealCareer™ Weld Defects Kit \$1,349 – 52510200

Teach users how to identify, correct, and prevent common weld defects.

Features:

- Portable, lightweight kit
- Visual inspection
- Flashcards and curriculum offer further education and practice opportunities

Includes:

- 1 quality weld and 12 weld defect models in case
- Welding defect definition insert
- 10 sets of flashcards (13 cards per set)
- 5 classroom posters (Weld Positions, Weld Safety, Weld Parts, Weld Types, and Weld Defects)
- Instructor guide
- Standards-based, downloadable curriculum
- 1-year limited warranty



Specifications:

- Case: 21" (53.3 cm) x 7" (17.78 cm) x 16" (40.6 cm)
- Coupons: 5" (12.7 cm) x 2.75" (7 cm)
- Weight: 9.5 lbs (4.3 kg)

RealCareer Weld Defects Kit

- Curriculum lesson topics:
  1. Welding Safety - PPE
  2. Types of Welding
  3. Welding Basics and Techniques
  4. Welding Defects
  5. Weld Testing
  6. Welding Review and Assessment
- Teaching hours: 10
- Includes: Presentation slides and student activities
- Aligns to: Common Career Technical Core Standards

| Welding Joint |                 |    |                            |
|---------------|-----------------|----|----------------------------|
| 1             | Undercut        | 7  | Concavity                  |
| 2             | Overlap         | 8  | Convexity                  |
| 3             | Lack of Fusion  | 9  | Insufficient Reinforcement |
| 4             | Inconsistency   | 10 | Excessive Reinforcement    |
| 5             | Spatter         | 11 | Porosity                   |
| 6             | Slag Inclusions | 12 | Arc Strike                 |

Common Welding Joints Kit \$999 – 53010100

Teach students how to identify the most common welding joints, achieve quality welds, and prevent issues that may arise.

Features:

- Portable, lightweight kit
- Visual inspection
- Flashcards and curriculum offer further education and practice opportunities

Includes:

- 10 common weld joint models (SMAW and GMAW)
- 1 set of flashcards (10 cards per set)
- Carrying case
- Instructor guide
- Standards-based, downloadable curriculum
- 1-year limited warranty

Specifications:

- Case: 21" (53.3 cm) x 7" (17.78 cm) x 16" (40.6 cm)
- Coupons: 5" (12.7 cm) x 2.75" (7 cm)
- Weight: 9.5 lbs (4.3 kg)



| Welding Joint |   |
|---------------|---|
| 1             | Butt Joint                                  |
| 2             | Groove Joint - MIG (2 pass)                 |
| 3             | Groove Joint - STICK (2 pass)               |
| 4             | Butt Joint - Square Butt/Groove (tack only) |
| 5             | Groove Joint - Single V Groove (tack only)  |
| 6             | Tee Joint                                   |
| 7             | Lap Joint                                   |
| 8             | 6-inch Pipe                                 |
| 9             | Intermittent weld: 2/side Length & Pitch    |
| 10            | Intermittent weld: 3/side Length & Pitch    |

Common Welding Joints Kit

- Curriculum lesson topics:
  1. Common Welding Positioning
  2. Identifying Common Welding Joints
- Teaching hours: 1-2
- Includes: Presentation slides and student activities
- Aligns to: Common Career Technical Core Standards

RealCareer™ Bend Tester \$3,999 – 53510100

Help users learn how to qualify a bend-tested weld and understand qualification standards.

Features:

- Tabletop size for shop or off-site portability
- Manual hydraulic jack
- Use with destructive and/or non-destructive testing
- Auto-close safety cover with auto latch
- Bends 1/8" plates, 1/4" plates and 3/8" plates
- Conforms to AWS D1.1 bend test specifications

Includes:

- Bend tester
- Plungers: 1/2", 1" and 1 1/2"
- Jack handle
- 2 classroom posters (Bending Basics and Qualifications)
- Instructor guide
- Standards-based, downloadable curriculum
- 1-year limited warranty

Specifications:

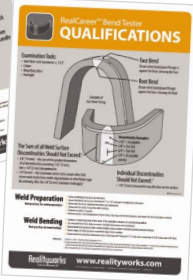
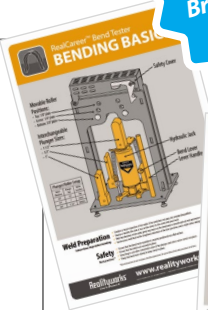
- Dimensions: 24.5" (62.2 cm) x 13.75" (35 cm) x 11" (28 cm)
- Weight: 93 lbs (42.1 kg)



FREE  
Career Exploration  
Brainstorming Web!  
(LAST PAGE)

RealCareer Bend Tester

- Curriculum lesson topics:
  1. Welding Safety - PPE
  2. Parts of a WPS
  3. Reading a WPS
  4. Nondestructive and Destructive Testing
  5. Prepare to Weld for a Bend Test Qualification
  6. Welding a Qualification Test
  7. Preparing to Bend and Examining a Bend for Qualification
  8. Welding Career Opportunities
- Teaching hours: 15
- Includes: Presentation slides and student activities
- Aligns to: Common Career Technical Core Standards



NOTICE: Additional shipping surcharge applies.



## Measurement Math Training Kit \$849 – 58010100

Introduce students to more than 250 different measurements to train and test their measurement math skills.

### Includes:

- 5 sets of measurement manipulatives
- 5 rulers
- 5 storage boxes
- 20 student workbooks
- Standards-based, downloadable curriculum
- Student access to online lessons and activities
- 1-year limited warranty

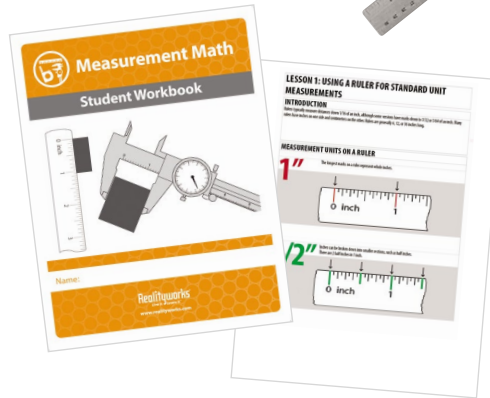


## Measurement Math Student Workbooks (Set of 20) \$359 – 58010120

Visit [www.realityworks.com/product/measurement-math](http://www.realityworks.com/product/measurement-math) for options and a free online trial

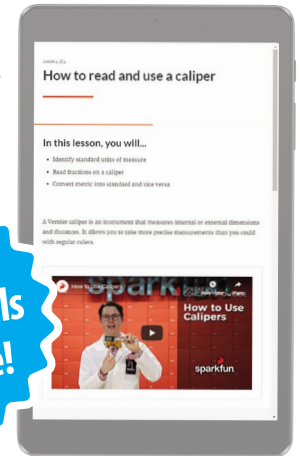
### Measurement Math

- Curriculum lesson topics:
  1. Metric and Standard Readings
  2. How to Read a Ruler/Tape Measure
  3. How to Read and Use a Caliper
  4. Decimals
  5. Conversions
  6. Measurements Using a Tape Measure
  7. Measurements Using a Caliper
- Teaching hours: 5-10
- Includes: Presentation slides and student activities



Shown: Lesson example  
on a tablet screen  
(tablet not included)

Free  
online trials  
available!



## RealCareer™ Electrical Wiring Kit \$949 – 57010101

Give users safe, hands-on lessons on wiring common electrical circuits.

### Features:

- Portable, battery-operated kit
- Uses low-voltage DC power to assess AC wiring
- Instant assessment and corrective feedback so students can diagnose problems without disassembling outlets or creating sparks
- Features 16 student-led exercises for wiring outlet, light, and switch circuits

### Includes:

- Wall Panel Demonstrator
- Electrical wiring components
- Electrical Wiring Assessment Kit
- 2 Breakout Boxes (1 on Wall Panel Demonstrator)
- 16 Student Exercises
- Standards-based, downloadable curriculum
- 1-year limited warranty

## Additional Wall Unit and Components \$449 – 57010201

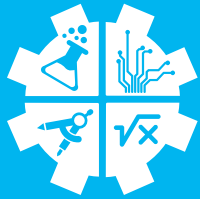


Wall Panel Dimensions:  
31.5" (80.01 cm) x 5.5" (13.97 cm) x 21.75" (55.245 cm)

### RealCareer Electrical Wiring Kit

- Curriculum lesson topics:
  1. Electrical Safety
  2. Electrical Principles
  3. Basic Wiring Skills
- Teaching hours: 13
- Includes: Presentation slides and student activities
- Aligns to: Common Career Technical Core Standards

# Realityworks + STEM/STEAM



# STEM

Science, technology, engineering, and mathematics (STEM) programs are widely considered necessary for a well-rounded education. Realityworks offers a range of products and curricula that incorporate STEM concepts to:

- Strengthen instruction and student engagement
- Provide hands-on learning opportunities
- Improve attainment of skills related to STEM subjects

*"Hands-on learning really helps... I can sit here and talk, but when they actually get to see it and get their hands on it, it brings a whole new level of education to the experience."*

- Nathan Anderson, Agriculture Educator  
On TikTok: @mnagteacher





## RC Tractor Pull Challenge (5-pack) with Pulling Sled

\$2,999 – 40610105

Create interactive STEM challenges with this kit, which includes five remote-controlled tractors that can be adjusted for different pulling outcomes.

### Use these tractors to:

- Explore tractor systems and structures
- Experiment with force, friction, and other STEM subjects
- Foster teamwork, problem-solving, and other soft skills

### Includes:

- 5 tractors
- 5 RC remotes
- 5 motors
- 300 washer weights
- 10 pinion gears
- 15 spur gears
- 20 tires
- 5 tractor covers
- 1 pulling sled
- 12 sled weights
- CAD drawings for tractor covers
- 5 storage boxes
- Quick start guide
- Standards-based, downloadable curriculum
- 1-year limited warranty

RC Tractor Pulling Sled add-on \$699 – 40610100



### RC Tractor Pull Challenge

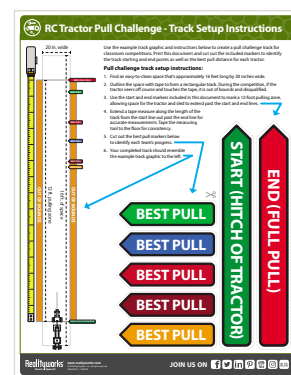
- Curriculum lesson topics:
  1. About the Tractor
  2. Testing Tractor Configurations
  3. Gears and Tires
  4. Weight and Friction
  5. Tractor Pull Setup
- Teaching hours: 5-7
- Includes: Lesson plans, student activities, presentation slides, tractor challenge, and assessments
- Aligns to: Curriculum for Agricultural Science Education (CASE)



### Specifications:

- Tractor dimensions: 9.5" (24.13 cm) x 6.5" (16.51 cm) x 4.5" (11.43 cm)
- Tractor weight: 1.5 lbs (0.68 kg)
- Sled dimensions: 20" (50.8 cm) x 6.5" (16.51 cm) x 6.5" (16.51 cm)
- Sled weight: 1 lb (0.45 kg)

*Students can assemble each of the five tractors and experiment with variables for different pulling outcomes.*



*Use the Track Setup Instructions for consistent track dimensions.*

# Soft Skills Programs

Available in online and print formats, our soft skills programs use real-world scenarios and activities to help students practice in-demand employability, leadership, and entrepreneurship skills.

All programs are flexible; they can stand alone or supplement any CTE pathway.

| <b>Employability Skills Program</b> (online and paper-based) |                                       |    |                      |
|--|---------------------------------------|----|----------------------|
| Curriculum lesson topics:                                    |                                       |    |                      |
| 1  | Communication                         | 11 | Responsibility       |
| 2  | Teamwork                              | 12 | Flexibility          |
| 3  | Problem Solving and Critical Thinking | 13 | Interpersonal Skills |
| 4  | Using Technology                      | 14 | Negotiation          |
| 5  | Time Management                       | 15 | Networking           |
| 6  | Interviews                            | 16 | Patience             |
| 7  | Motivation                            | 17 | Presentation Skills  |
| 8  | Work Ethic                            | 18 | Self-Confidence      |
| 9  | Listening                             | 19 | Stress Management    |
| 10   | Respect                               |    |                      |
| <i>Aligns to: Employability Skills Framework</i>             |                                       |    |                      |

| <b>Leadership Skills Program</b> (online and paper-based)                       |                                  |    |                      |
|---|----------------------------------|----|----------------------|
| Curriculum lesson topics:   |                                  |    |                      |
| 1   | Trust                            | 11 | Servant Leadership   |
| 2   | Professionalism                  | 12 | Team Building        |
| 3   | Coaching and Mentoring           | 13 | Visionary Leadership |
| 4   | Conflicts Resolution             | 14 | Optimism             |
| 5   | Decision Making and Goal Setting | 15 | Public Speaking      |
| 6   | Delegation                       | 16 | Observation          |
| 7   | Honesty and Integrity            | 17 | Creativity           |
| 8   | Diplomacy and Tact               | 18 | People Skills        |
| 9   | Determination                    |    |                      |
| 10  | Empathy                          |    |                      |
| <i>Aligns to: AAFCS Pre-Professional Certification in Leadership Essentials</i> |                                  |    |                      |

| <b>Contemporary Entrepreneurship Program</b> (online and paper-based)       |                                    |    |   |
|---|------------------------------------|----|---|
| Curriculum lesson topics:   |                                    |    |   |
| 1   | The Entrepreneurial Process        | 6  | Writing Your Business Plan Parts 1 – 2  |
| 2   | Entrepreneur Traits and Leadership | 7  | Writing Your Business Plan Parts 3 – 5  |
| 3   | Conducting Market Research         | 8  | Writing Your Business Plan Parts 6 – 7  |
| 4   | Financial Issues                   | 9  | Writing Your Business Plan Parts 8 – 10 |
| 5   | Legal Issues                       | 10 | How to Pitch Your Product               |
| <i>Aligns to: National Content Standards for Entrepreneurship Education</i> |                                    |    |   |

## Online soft skills programs

### All online soft skills programs include:

- Interactive online lessons
- Summative knowledge check
- Student dashboard with access to lessons
- Instructor dashboard with instructor guide, CTSO alignments, and completion certificates

### Online soft skills program access options:

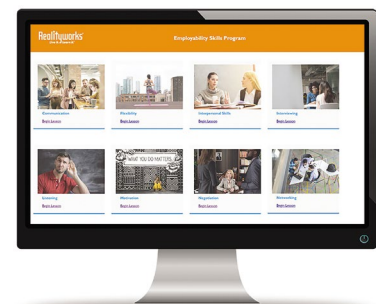
- Teacher license for one classroom
- Site license for multiple classrooms at one school
- District license for multiple classrooms at multiple schools
- Licenses available for 1-year, 3-year, and 5-year periods

Visit [www.realityworks.com/product-category/soft-skills-training](http://www.realityworks.com/product-category/soft-skills-training)

for options and a free trial of each online program.

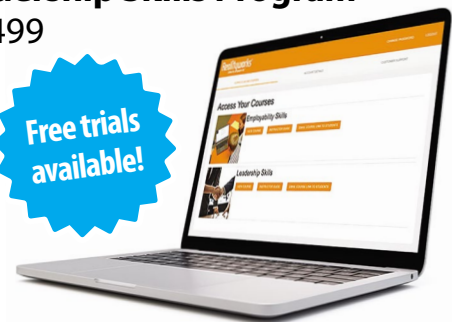
## Online Employability Skills Program

\$549 - \$16,499



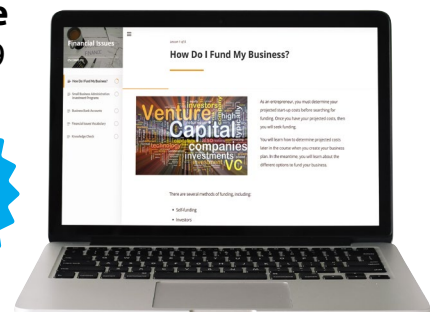
## Online Leadership Skills Program

\$549 - \$16,499



## Contemporary Entrepreneurship Online Course

\$499 - \$14,999





## Paper-based soft skills programs

### All paper-based soft skills programs include:

- Self-paced learning and information
- Guided lessons broken into topic sections
- Practical skill application through scenarios and activities
- 20 student workbooks
- Storage box
- Downloadable presentation slides
- Activity cards
- 1-year limited warranty

Visit [www.realityworks.com/product-category/soft-skills-training](http://www.realityworks.com/product-category/soft-skills-training) for sample lessons and sample activity cards.



### Employability Skills Program (paper-based) \$699 – 11130945

**Employability Skills Program Student Workbooks (Set of 20)**  
\$329 – 11130946



### Leadership Skills Program (paper-based) \$699 – 11160301

**Leadership Skills Program Student Workbooks (Set of 20)**  
\$329 – 11160302



### Contemporary Entrepreneurship Program (paper-based) \$899 – 11137111

**Contemporary Entrepreneurship Program Student Workbooks (Set of 20)**  
\$219 – 11137112

**NOTICE:** Includes printable vocabulary cards.

## Employability Workplace Scenario Cards

Put students in real-world workplace situations that challenge them to think critically and problem-solve with these pathway/occupation-specific cards. Each scenario pack includes 19 cards.

### Welding Career Scenario Cards (1 pack)

\$69 – 11120405

### Electrician Career Scenario Cards (1 pack)

\$69 – 11120425

### Construction Career Scenario Cards (1 pack)

\$69 – 11120324

### Manufacturing Career Scenario Cards (1 pack)

\$69 – 11120323



# Career Exploration Package

Hands-on training tools, activities, and lessons to create engaging exploration stations.

## NEW - Trades Career Exploration Pack

**\$7,999** - 31910235

Use the seven hands-on learning aids in our Trades Career Exploration Pack to introduce students to different trades careers, such as welder, electrician, and construction worker. Students can learn about metric and standard readings, wiring common electrical circuits, basic welding skills, and more with these engaging tools.

### 55 hours of course content, 7 hands-on resources:

Measurement Math Training Kit, RealCareer Electrical Wiring Kit, guideWELD VR welding simulator (MIG or Stick), Common Welding Joints Kit, Welding Career Scenario Cards, Construction Career Scenario Cards, Electrician Career Scenario Cards



## Awards



Realityworks' New RC Tractor Pull Challenge Named EdTech Cool Tool 2023 Finalist



Tech Edvocate Awards 2022 Finalist – RC Tractor Pull Challenge



2021 Best Math App or Tool – Measurement Math Training Kit



2020 Best Gamification App or Tool – guideWELD® VR Welding Simulator

Visit [www.realityworks.com/news/press-releases-news-articles](http://www.realityworks.com/news/press-releases-news-articles) to see all awards and press releases





# Free resources for teachers

Engage students, explore career,s and teach in-demand skills with:

- Free guides on incorporating instructional strategies
- Free career exploration lesson plans
- Free downloadable classroom posters
- and more...

Visit [www.realityworks.com/resources/classroom-ideas](http://www.realityworks.com/resources/classroom-ideas) to see all of our free resources for teachers.



# Let's get social!

Follow Realityworks on social media for promotions, webinar announcements, free resources, product launches, and more!



# Product wish list

Email your own product wish list to [information@realityworks.com](mailto:information@realityworks.com) to receive a free, customized quote.

| SKU | PRODUCT NAME | QUANTITY | PRICE |
|-----|--------------|----------|-------|
|     |              |          |       |
|     |              |          |       |
|     |              |          |       |
|     |              |          |       |
|     |              |          |       |
|     |              |          |       |
|     |              |          |       |
|     |              |          |       |
|     |              |          |       |
|     |              |          |       |

Or submit a digital wish list!

Scan me



# How to order

Order products and supplies online at:  
[www.realityworks.com](http://www.realityworks.com)

Email orders to:  
[orders@realityworks.com](mailto:orders@realityworks.com)

Call with credit card:  
855.351.8936

Mail purchase orders to:  
2709 Mondovi Road  
Eau Claire, WI 54701

All orders must be accompanied by a check, credit card number, or purchase order. Returns may be subject to a restocking fee. Product availability and prices subject to change without notice.

Shipping and handling varies by product with a minimum charge of \$18.00 (applies to 48 contiguous U.S. only). **Bulky and oversized items may require additional shipping surcharges, contact Realityworks®, Inc. for details.** **HI + AK please contact us for shipping quote.**

**Contact Realityworks®, Inc. for accelerated or special shipping requirements.**

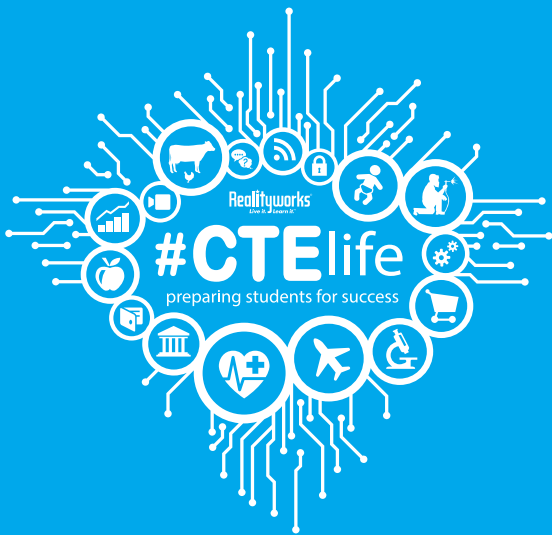
# Product support

- We offer:**
- Videos, guides, and FAQs in our online Product Support Center
  - Personalized assistance via live chat, phone, or email

**Contact us:**

- [productsupport@realityworks.com](mailto:productsupport@realityworks.com) or call 800.830.1416, option 2, Monday-Friday 7:30 AM-5:00 PM CT.

**Learn more:**  
[www.realityworks.com/knowledge-base](http://www.realityworks.com/knowledge-base)



Realityworks, Inc.  
2709 Mondovi Road  
Eau Claire, WI 54701

PRSRT STD  
US POSTAGE  
PAID  
EAU CLAIRE WI  
PERMIT #2000

## Why purchase Realityworks' products & programs?

### Curriculum included

Each product comes with standards-based curriculum that includes presentation slides, student activities, and assessment tools.

### Created in partnership with educators

We partner with educators, administrators, and industry leaders to ensure our offerings meet their needs and make lessons truly meaningful.

### Engaging and interactive for today's learners

The 21st century learner craves real-time information. Our hands-on learning aids engage students with interactivity and real-life situations.

### Customer support

Webinars, warranties, trainings, and our support team are here to help educators maximize their programs.



**Realityworks®**  
Live it. Learn it.™

**100% EMPLOYEE-OWNED**

**855.351.8936**

**[www.realityworks.com](http://www.realityworks.com)**

© 2024 Realityworks, Inc. All rights reserved.

1042761-08 Trade Skills Focus Catalog | 01/2024

***Contact us for a customized quote  
to meet your program needs.***

**Our Account Managers are ready to connect with you!**

**Call us at 855.351.8936 or email [information@realityworks.com](mailto:information@realityworks.com)**

**JOIN US ON**





# FREE STUDENT ACTIVITY!

## Career Exploration Brainstorming Web

Get your students thinking about all the career opportunities available to welders with this brainstorming web included with our RealCareer™ Bend Tester.

Download the activity here:

<[LINK - PRINT READY PDF](#)>



**FREE**  
Career Exploration  
Brainstorming  
Web!

### Our Program Curriculum:

The Hidden Gem of Our Hands-On Learning Aids

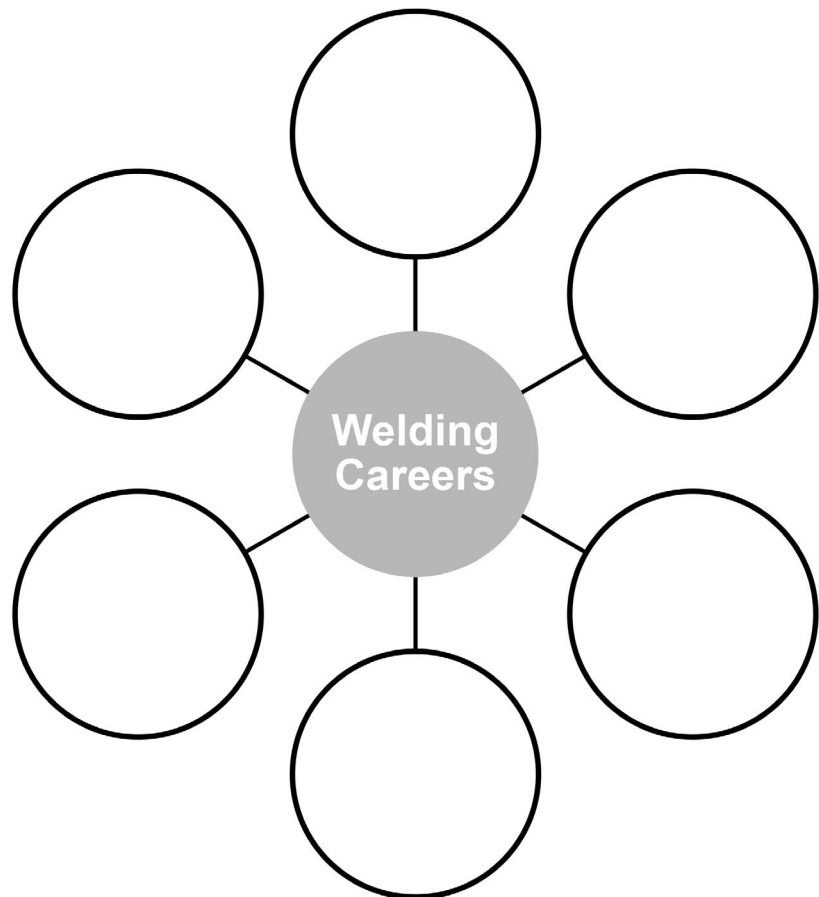
Our program curriculum is designed to enhance hands-on learning experiences by providing standards-based lessons written by teachers, including activities, worksheets, quizzes, and more.

Learn more here: <https://www.realityworks.com/blog/our-program-curriculum-the-hidden-gem-of-our-hands-on-learning-aids/>

RealCareer® Welding Solutions – RealCareer™ Bend Tester

## Career Exploration Brainstorming Web

Directions: With your group, brainstorm as many careers relating to welding as you can in 5 minutes. Write each career identified in a circle. Draw additional circles as needed.



Realityworks®

800.830.1416

[www.realityworks.com](http://www.realityworks.com)

97

1035290-01A